

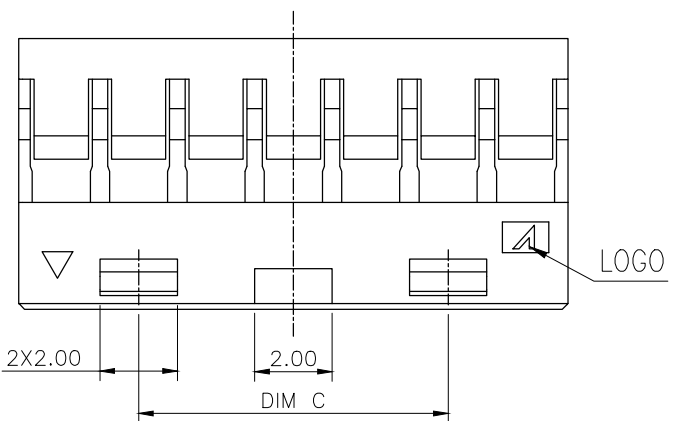
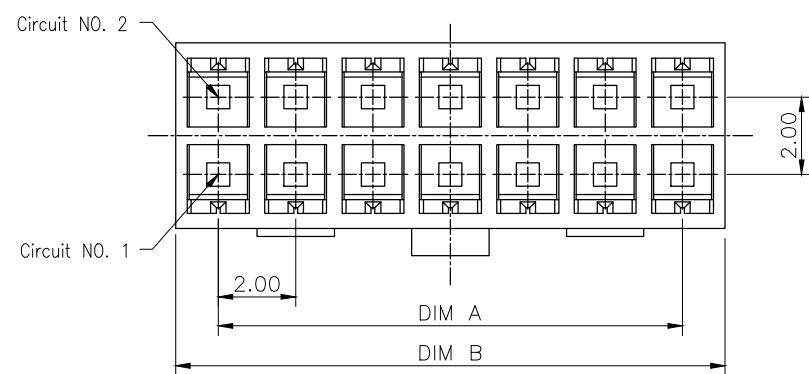
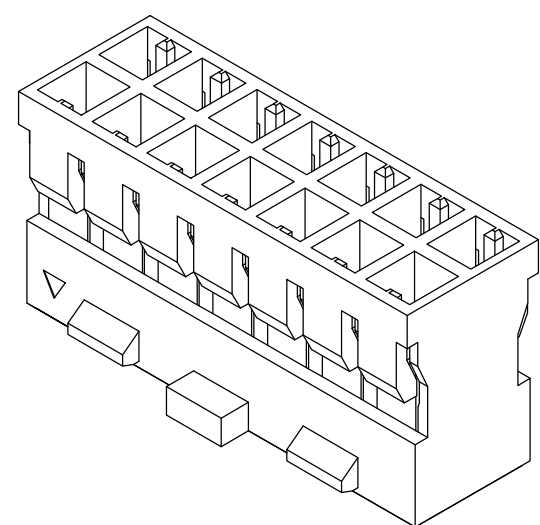
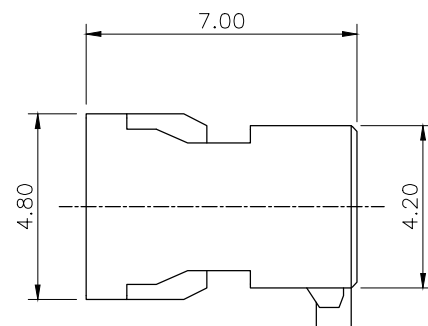
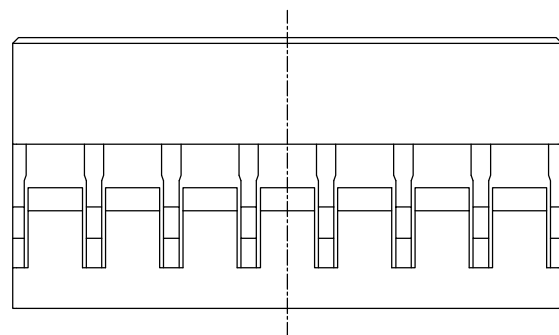


- NOTES:
- MATERIAL:
 - HOUSING: THERMOPLASTIC, HIGH TEMP., UL94V-0, COLOR:BLACK;
 - SPEC. PLS. REFER TO PS-51352-xxxxx-xxx
 - PACKING QUANTITY: XXX PCS/BAG
 - PART NUMBER

51383-XXX H X X X-XXX

NO OF CKTS ———— POLARIZATION ———— MATERIAL
 0: NONE ———— 0: NONE ———— H:NYLON 66 (50000-0101-03)

————— 001: BAG PACKING
 ———— COLOR
 1:BLACK



| CKT | Dim A | Dim B | Dim C |
|-----|-------|-------|-------|
| 14 | 12.00 | 14.20 | 8.00 |
| 18 | 16.00 | 18.20 | 12.00 |
| 20 | 18.00 | 20.20 | 14.00 |
| 24 | 22.00 | 24.20 | 18.00 |

| | | | | |
|-----------------------------------------------------------------------------------------------------------------------------------------------------|----------------------------|---------------------|------------|------------------------------|
| QUALITY SYMBOLS MAJOR Ⓞ CRITICAL Ⓢ GENERAL TOLERANCES (UNLESS SPECIFIED) .X ±0.5 .X ±0.25 .XX ±0.15 .XXX ±0.1 ANGLES ±2° | DRAWN BY RongLi Ping | DATE 20/03/26 | | TITLE 2.0mm WTB HOUSING |
| | CHECKED BY Lu Jing Quan | DATE 20/03/26 | | |
| | UNITS mm | | SIZE A4 | RFQ NO. N/A |
| | SCALE 1:1 | SHEET NO. 1 OF 2 | REV C | DWG NO. 51383-XXXHXXX-XXX |

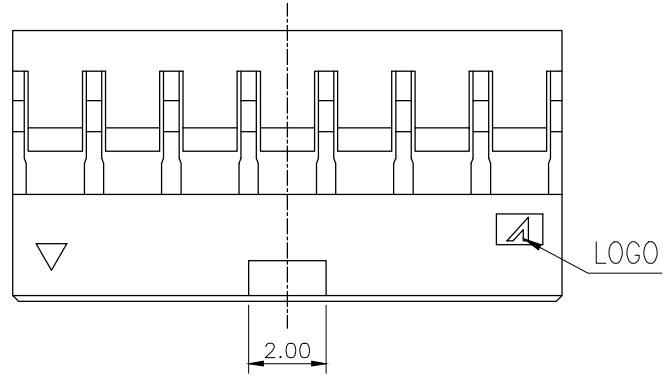
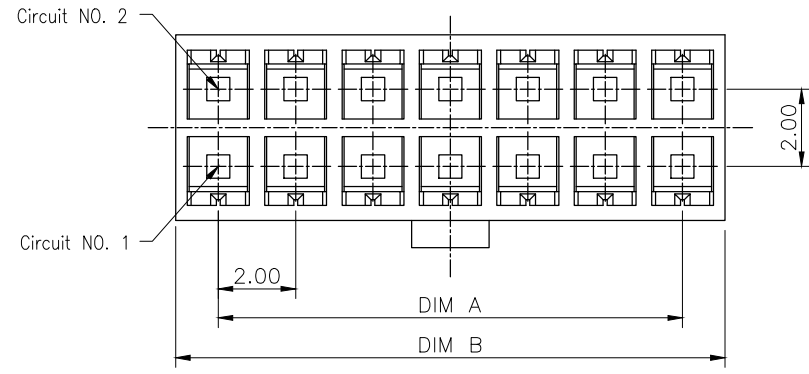
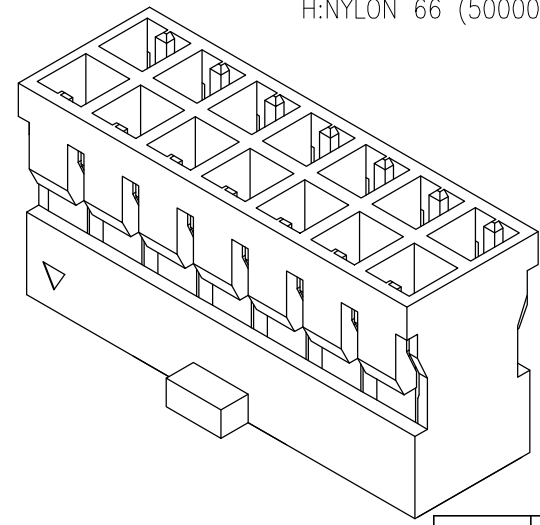
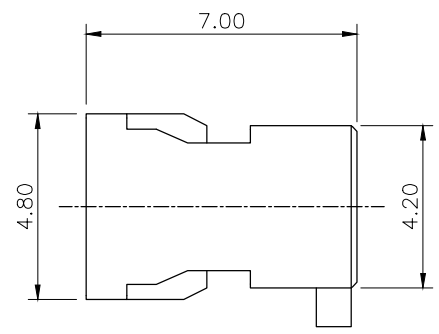
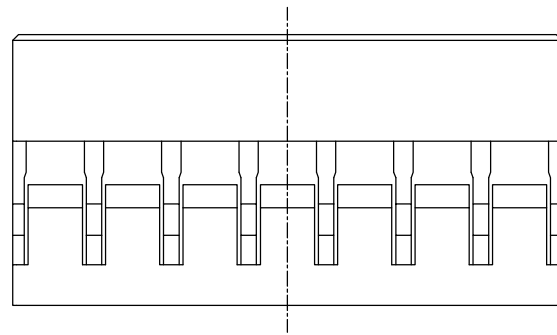


NOTES:

1. MATERIAL:
 - 1.1 HOUSING: THERMOPLASTIC, HIGH TEMP., UL94V-0, COLOR:BLACK;
2. SPEC. PLS. REFER TO PS-51352-xxxxx-xxx
3. PACKING QUANTITY: XXX PCS/BAG
4. PART NUMBER

51383-XXX H X X X-XXX

NO OF CKTS: 002: WITHOUT LOCK
 POLARIZATION: 0: NONE, 1: BLACK
 MATERIAL: H: NYLON 66 (50000-0101-03)



| CKT | Dim A | Dim B |
|-----|-------|-------|
| 4 | 2.00 | 4.20 |
| 6 | 4.00 | 6.20 |
| 8 | 6.00 | 8.20 |
| 10 | 8.00 | 10.20 |
| 12 | 10.00 | 12.20 |

| | | |
|---------------------------------------------------------------------------------------------------------|--------------------------------------------|--------------------------|
| QUALITY SYMBOLS MAJOR CRITICAL | DRAWN BY: RongLi Ping DATE: 20/03/26 | |
| | CHECKED BY: Lu Jing Quan DATE: 20/03/26 | |
| GENERAL TOLERANCES (UNLESS SPECIFIED) X. ±0.5 .X ±0.25 .XX ±0.15 .XXX ±0.1 ANGLES ±2° | APPROVED BY: hsieh fu yu DATE: 20/03/26 | TITLE: 2.0mm WTB HOUSING |
| | UNITS: mm SCALE: 1:1 | SHEET NO.: 2 OF 2 |